

Arh. I.N.P.

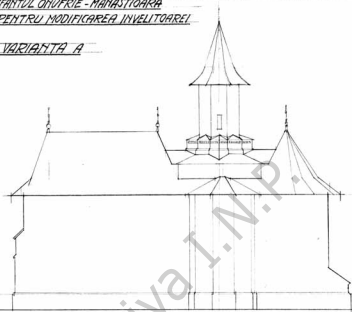
*Spantul Onufie - Măruștea
 Detali. Ferestra apo rest ale
 Lucrării. 1937.*



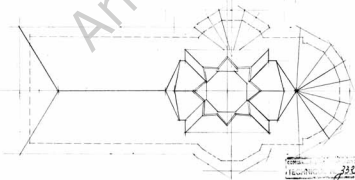
STANCIU GABRIEL 1937
 (1937) No. 11/1

Biserica Sfântul Onufrie - Mănăstirea
PROIECT PENTRU MODIFICAREA INVELITOAREI

VARIANTA A



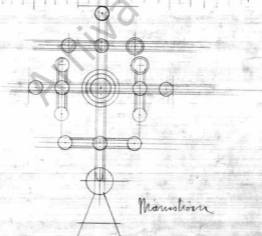
SCARA 0,01 METRU



TEHNICIAN 382
24 SEPTEMBRIE 1952
Leodan



Arjuna I.N.P.



Manshin



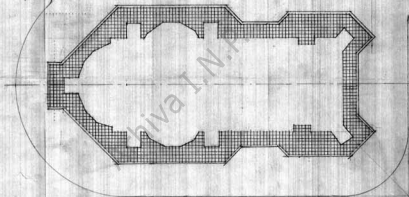
FIG. 4414



Planul parajului la bis. a) Diferenț

la Clădirea, fcl. Rădăni

Scara A: 1:100

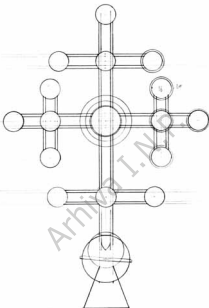


REZULTAT / proiectant

Scara A: 1:100



TEHNICAL N. 3099/914



Arhive I.A.P.

Manshi ore

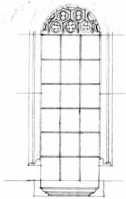
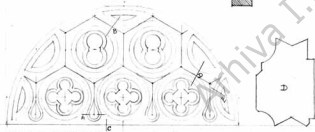
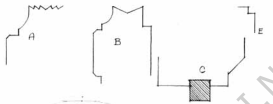
11/11/11

15

Arhiva	1940
Proiectant	
Scara	1:50

BISERICA SFANTUL ONUFRIE - MANASTIOARA - BUCOVINA

SCARA 0M05.1METRU



DETALIUL TIMPANULUI SCARA 0M20.1METRU

ELEVATIE

SECTIE

KOTELE, SABLORMELE, LOCASURILE FIARELOR GRILELOR, DETALIILE PIETREI COPLITE ETC SE VOR LUA LA PATA LOCULUI-

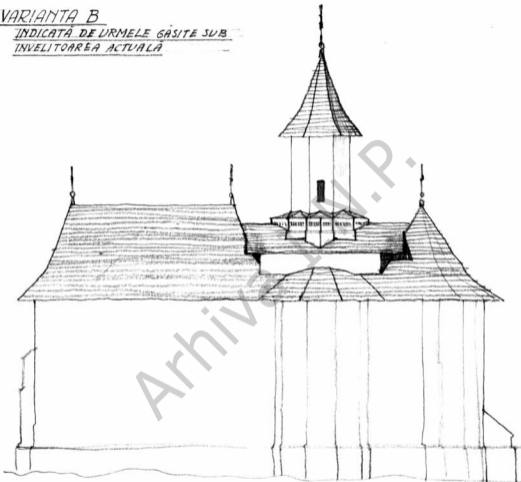
16 AUGUST ARHITECT/ Ion I. Todoran

Arhiva I.N.P.

19

VARIANTA B

INDICATA DE URMELE GASITE SUB
INVELITOAREA ACTUALA



ELEVATIE SCARA 0'01-ANETRU

BISERICA SFANTUL ONUFRIE - MANASTIOARA - PROECT PENTRU MO-
DIFICAREA INVELITOAREI

20 SEPTEMBRIE 1957 ARHITECT *Terziu*

20-

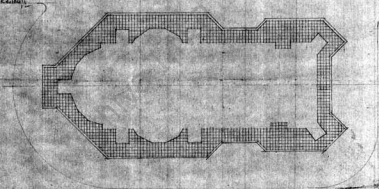


4x

Planul parajului Ta. bis. si Danfoai

si Masochinaca, pod Raituli

Scara 1:100



1939, Institutul de Cercetari

